



boss



## KALAHARI 3 HEAD WIDE BELT SANDER

### MODELS

**1100R-R-RC**

**1350R-R-RC**



282 Orenda Road, Brampton, ON, L6T 4X6



800.386.5222



[www.bossmachines.com](http://www.bossmachines.com)

# FEATURES »

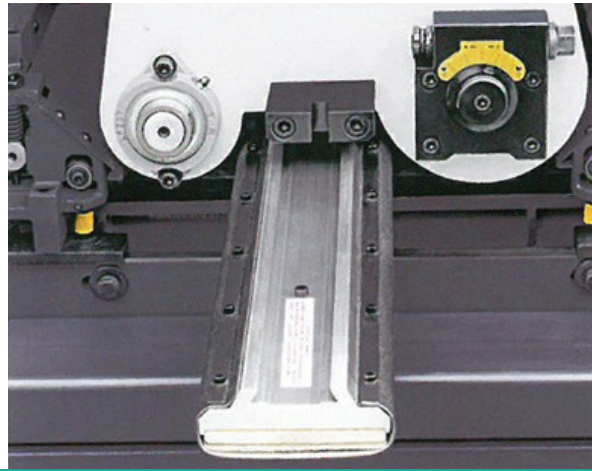
## ROLLER - ROLLER - ROLLER/COMBINATION



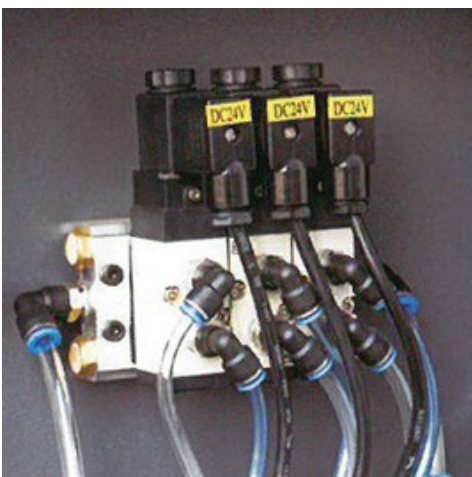
- » Heavy-duty steel structure engineered to eliminate distortion which generates maximum sanding precision
- » OPTIBLET™ triangle feed belt - no vibration/longer life
- » Automatic braking system which reduces belt breakage in the event of miss sanding belt tracking and/or power failure
- » Motorized air jet blowers to clean and cool sanding belt for longer life
- » SKF bearings, European electrics, dynamically balanced rollers, high efficiency gearbox with variable speed



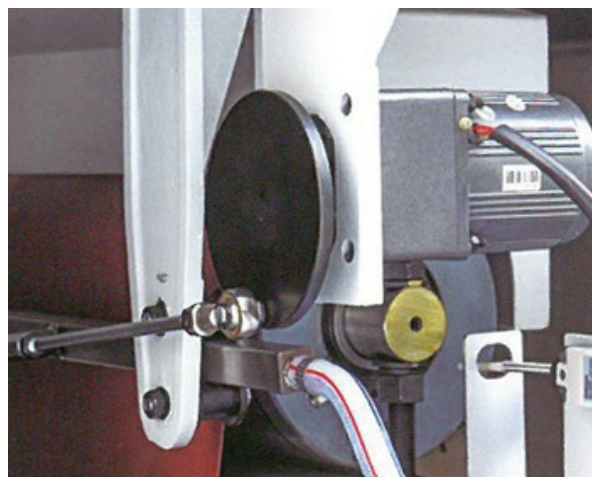
3 Working units



Wider sanding pad - Specially designed for veneer and solid wood panels



Extra sturdy, European brand high quality solenoid valves



Air jet blower for abrasive belt cleaning and cooling to extend belt life and increase sanding precision

# PRODUCT DETAILS »

## PRESSURE UNITS:

- ✓ Pressure units to hold the work pieces on the feed belt; are positioned in front and rear of each working unit: independent variable pressure control.
- ✓ Tower-type press rollers structure to ensure board stability while Sanding.

## FEED SYSTEM:

- ✓ Table surface fine-grinded to avoid wear of the internal side of the feed belt.
- ✓ Feed belt with rubber surface at appropriate hardness; top profile according to operation requirement.
- ✓ Drive unit with motor variator for feed speed variation.
- ✓ Feed speed variable in continuous from 6 - 22 m/min.

## THE FRONT WORKING UNIT:

- ✓ The first working unit is a sanding roller (diameter 240mm). complete with sanding belt tension unit, electronic oscillation, dust hoods and, safety systems.
- ✓ Roller is steel and helicoidal grooves for cooling.
- ✓ Oscillating air jet blowers for sanding belt cleaning, complete with dust hood.

## THE SECOND WORKING UNIT:

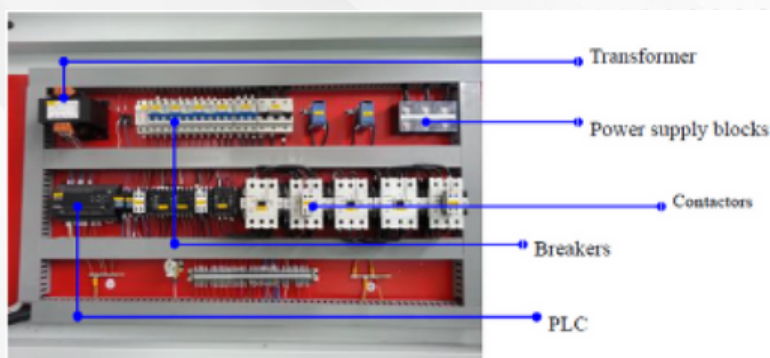
- ✓ Same as the first working unit except the roller is rubber with shore 85.

## THE THIRD WORKING UNIT:

- ✓ Working unit is a combination of roller (diameter 180mm) and pad, complete with sanding belt tension unit, electronic oscillation, dust hood and, safety systems.
- ✓ Pad can be adjusted up and down.
- ✓ Oscillating air jet blowers for sanding belt cleaning, complete with dust hood.
- ✓ Belt size is: 1380 x 2620 mm.

## ELECTRIC CABINET:

- ✓ Electric cabinet on the front side of the machine, includes a main switch.
- ✓ Push button and control panel at same side of sanding belt insertion.
- ✓ Electric cabinet built by standard CE rules UL approved






# SPECIFICATION »

## KALAHARI 3 HEAD 1100R-R-RC

Working width	40 - 1100 mm	First belt motor	22 kW
Working thickness	3 - 150 mm	Second belt motor	18.5 kW
Minimum working length	460 mm	Third belt motor	15 kW
Feeding speed	0-19 m/min (inverter)	Lift & decline table height	0.37 kW
First belt speed	22 m/s	Brush motor	0.25 kW
Second belt speed	22 m/s	Feeding motor	4 kW (inverter)
Third belt speed	16 m/s	Working pressure	0.4 - 0.8 Mpa
Sanding belt size	1130 x 2620 mm	Compressed air consumption	1.5 CBM/min
Conveyor size	1110 x 4700 mm	Overall dimension	2650 x 1750 x 2300 mm
Total power	60.2 kW	Weight	4800 kg

## KALAHARI 3 HEAD 1350R-R-RC

Working width	40 -1350 mm	First belt motor	22 kW
Working thickness	3 - 150 mm	Second belt motor	18.5 kW
Minimum working length	460 mm	Third belt motor	15 kW
Feeding speed	0-19 m/min (inverter)	Lift & decline table height	0.37 kW
First belt speed	22 m/s	Brush motor	0.25 kW
Second belt speed	22 m/s	Feeding motor	4 kW (inverter)
Third belt speed	16 m/s	Working pressure	0.4 - 0.8 MPa
Sanding belt size	1380 x 2620 mm	Compressed air consumption	1.5 CBM/min
Conveyor size	1360 x 4700 mm	Overall dimension	2650 x 2000 x 2300 mm
Total power	60.2 kW	Weight	5200 kg

 282 Orenda Road, Brampton, ON, L6T 4X6

 800.386.5222  [www.bossmachines.com](http://www.bossmachines.com)



All machines are supplied with the appropriate CSA or Electrical Safety Authority approvals. Any modifications that are required as a result of local or provincial inspection programs are the responsibility of the purchaser. Price quoted is based on current rate of exchange and is subject to adjustment to prevailing rate at time of payment. Machine understood to be subject to stock prior to sale. We reserve the right to correct any typographic, pictorial and pricing errors without notice.